

# Invasive Species Corporation



# ISC

---

Screening microorganisms to control  
burrowing shrimp

Sample Collecting Trip Summary

---

[Jim@invasivespeciescorporation.com](mailto:Jim@invasivespeciescorporation.com)

[Pam@invasivespeciescorporation.com](mailto:Pam@invasivespeciescorporation.com)

[Amit@invasivespeciescorporation.com](mailto:Amit@invasivespeciescorporation.com)

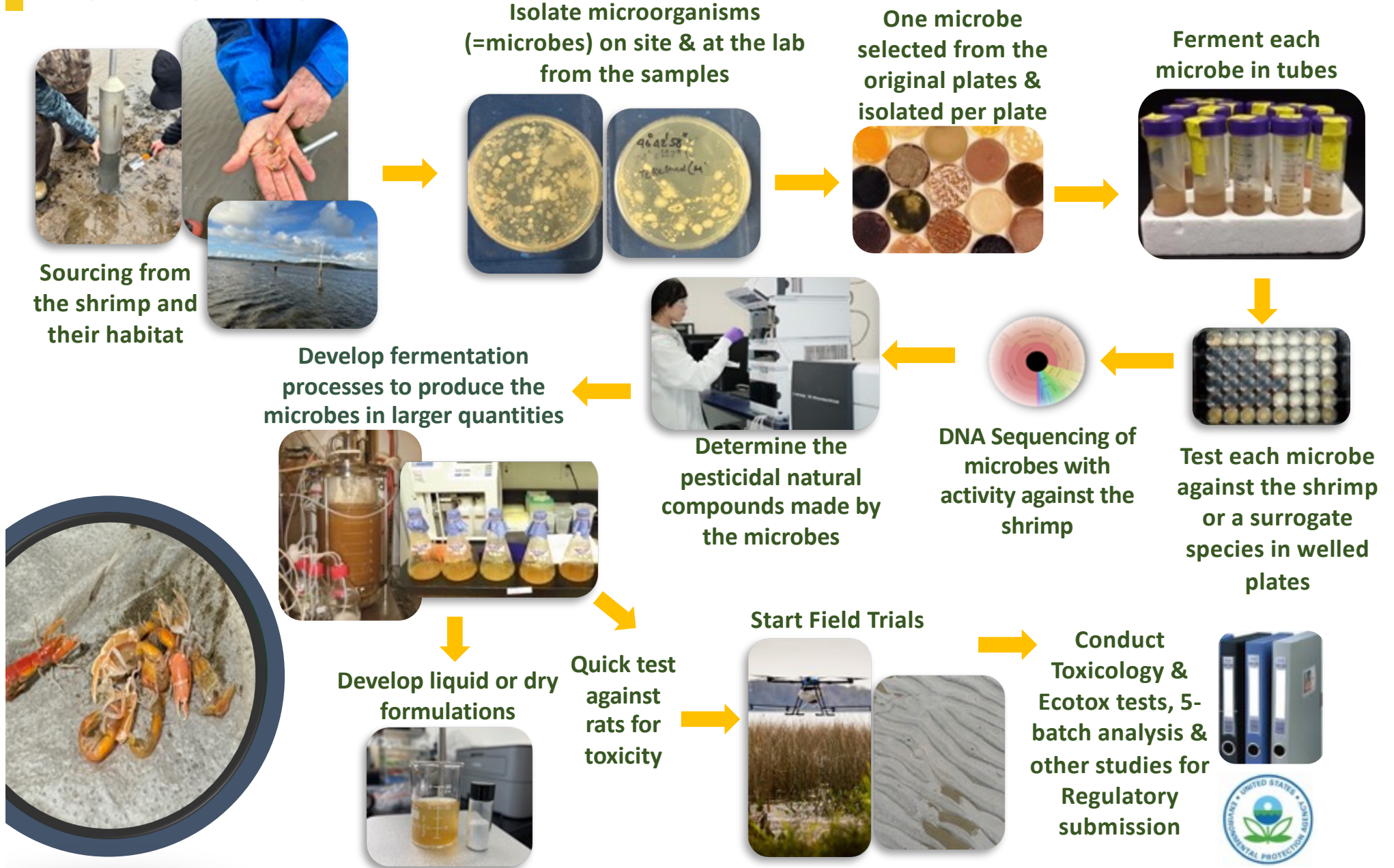
<https://www.invasivespeciescorporation.com>

A Delaware Public Benefit Corporation





# Discovering Microorganisms to Control Burrowing Shrimp: How We Do It



# Sample Collecting Trip Week Dec 4<sup>th</sup>

Seven sample collecting sites:

1. Behind Tradewinds Hotel (Dec 4)
2. Shoalwater Bay Site 1 (Dec 4)
3. Shoalwater Bay Site 2 (Dec 4)
4. Port of Peninsula (Dec 5)
5. TL 620 (Dec 5)
6. Along trail and beach 1.5 miles SW of Tradewinds (Dec 6)
7. Goosepoint Oyster Cedar River site (Dec 7)





## Day 1 - Dec 4<sup>th</sup> Site One – Behind Tradewinds Hotel

**Larissa Pfleeger-Ritzman**

Director, Natural Resources Department

Shoalwater Bay Indian Tribe

Tokeland, WA 98590

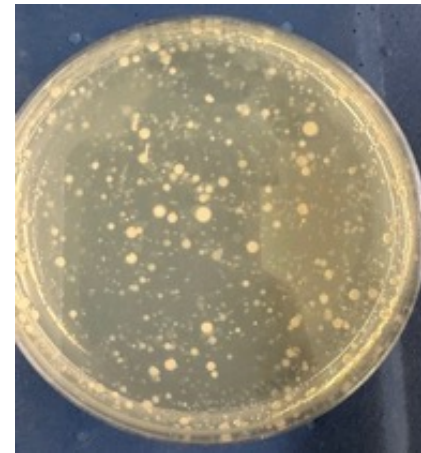
(360) 267-8108 (O)

[lpfleeger@shoalwaterbay-nsn.gov](mailto:lpfleeger@shoalwaterbay-nsn.gov)



# Day 1 - Dec 4<sup>th</sup> Two Sites – Shoalwater Bay

Guided by Larissa Pfleger-Ritzman





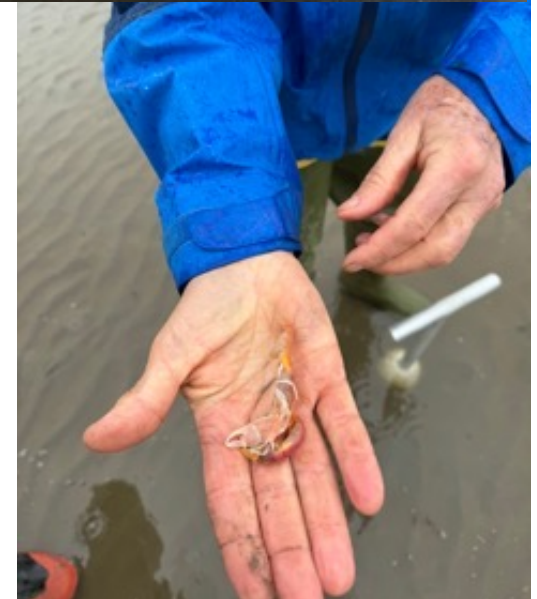
# Day 2 - Dec 5<sup>th</sup> TL-620



David Beugli, Executive Director  
Willapa-Grays Harbor Oyster  
Growers Association

Marilyn, Brian and Jeb Sheldon,  
Northern Oyster Co.

Kim Patten, WSU





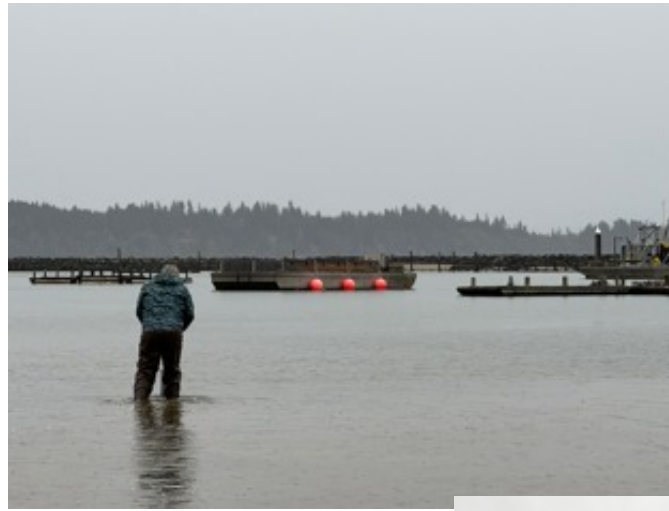
## Day 2 - Dec 5<sup>th</sup> Port of Peninsula



David Beugli, Executive Director  
Willapa-Grays Harbor Oyster  
Growers Association

Marilyn, Brian and Jeb Sheldon,  
Northern Oyster Co.

Kim Patten, WSU





**Day 3 – Dec 6<sup>th</sup> - Walking SW 1.5 miles behind Tradewinds Hotel**

---



**Day 4 – Dec 7<sup>th</sup> - Nisbet Oyster Co. /Cedar River Site  
Kathleen Nisbet-Moncy with  
Marilyn Sheldon**



**In the boat while the others  
did the hard sampling  
work!!**

